

JMLA Silber - Tonleitern

Tenorhorn (fis - b²)

portato, legato, staccato



NIEDERÖSTERREICHISCHER
BLASMUSIKVERBAND

♩ = 108

E - Dur



H - Dur



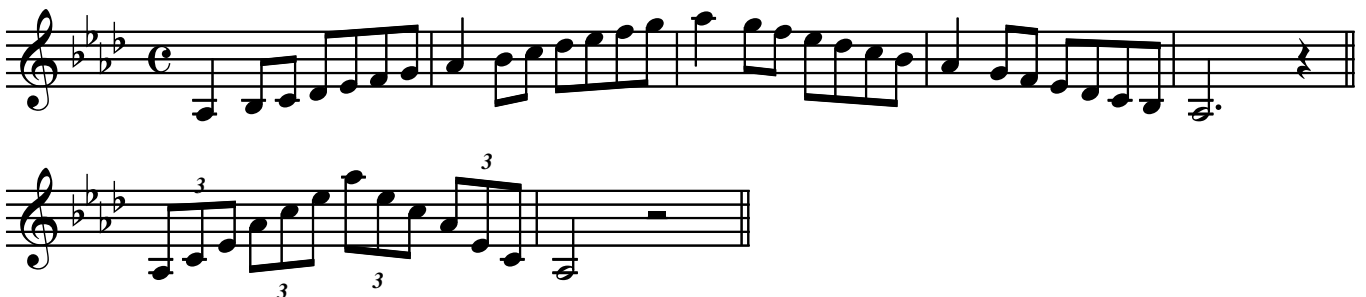
Fis - Dur



Cis - Dur



As - Dur



JMLA Silber - Tonleitern

Tenorhorn (fis - b²)

portato, legato, staccato



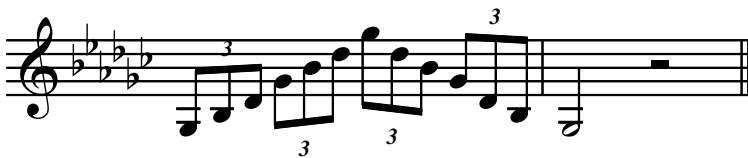
NIEDERÖSTERREICHISCHER
BLASMUSIKVERBAND

♩ = 108

Des - Dur



Ges - Dur



Ces - Dur



cis - Moll



gis - Moll



JMLA Silber - Tonleitern

Tenorhorn (fis - b²)

portato, legato, staccato



NIEDERÖSTERREICHISCHER
BLASMUSIKVERBAND

♩ = 108

gis - Moll

dis - Moll

ais - Moll



JMLA Silber - Tonleitern

Tenorhorn (fis - b²)

portato, legato, staccato

♩ = 108

f - Moll

b - Moll

es - Moll



JMLA Silber - Tonleitern

Tenorhorn (fis - b²)

portato, legato, staccato

♩ = 108

as - Moll

Three staves of musical notation for the first section in A minor. The first two staves show a melodic line with various intervals and accidentals. The third staff features triplet markings over groups of notes.

chromatische Skala

Two staves of musical notation for the chromatic scale. The first staff shows an ascending chromatic scale, and the second staff shows a descending chromatic scale.